

AZ Controller + BCR 2000

+

Preset B9 from MarKo

- 1. 8-Track Mode**
- 2. 24 - Track Mode**
- 3. Pro Channel Mode**
- 4. ACT Mode**
- 5. Installation**

- 6. Picture 8-Track Mode**
- 7. Picture 24-Track Mode**
- 8. Picture Pro Channel Mode**
- 9. Picture ACT Mode**

Overview BCR 2000



1. 8 Push Encoders (Sliders)
2. 8 LED Circles for the 8 Sliders
3. 16 Buttons
4. 16 Status LEDs for this Buttons
5. 24 Rotors
6. 24 LED circles for this 24 Rotors
7. 14 Function Buttons
8. 14 Status LEDs for this 14 Function Buttons

From Top to Bottom:

S1-8 (Slider)+ LED circles,
B9-16 (Buttons), B1-8,
R1-8 (Rotors), R9-16,
R17-24 and on the right
Function Buttons 1-14 (FB1-14)

Overview Preset B9 from MarKo

This Preset has 4 different „Modes“, for each Mode all Sliders, Rotors and Buttons have completely different Controls for Sonar Platinum!

All with 1! Preset of BCR2000!

Additional there are Modifier Keys like Shift on a PC Keyboard!

We have „Shift“, „Ctrl“, „Shift Hold“, „Shift Lock“ and „Press longer“ Keys for some Buttons and Rotors!

p.e. In 24-Track Mode R1-24 adjusts Volume, but with Shift + R1-24 we adjust Pan!

The 4 different Modes

(In Details later!)

8-Track Mode

Volume 1-8, Pan 1-8, Send1FX 1-8, Send2FX 1-8, Pan Send1FX 1-8, Solo 1-8, Mute 1-8. Bank Key for Shifting WAI, Bus Key.

24-Track Mode

Volume 1-24, Pan 1-24, Bus Volume 1-8, Bus Solo 1-8, Bus Mute 1-8

ProChannel Mode

Changing of all Parameters without ACT!!
Change all Parameters of:

- Bus/Track Compressors
- Equalizer (FlyOut Window and Inspector)
- Tube
- Console Emulator

ACT Mode

Rotors 1-24, Sliders 1-8, Buttons 1-8, Buttons 9-16
All available for ACT assignment.

Within all 4 Modes (**R17-24** only in 8-Track Mode) we have Function Buttons and Rotors for:

Master Vol, Master Bus Vol, Speed Dial, ACT Speed Dial, Track Select, Zoom All Tracks vertical, Zoom 1 Track vertical, Zoom horizontal, Jog, Scrub, Bar <>, Tempo +-, Play, Rec, Stop, Stop and back 2 bars, Reset all Modes, Set Marker, Marker <>, Selection > Loop, Loop On/Off, Selection Start/End, Fine Resolution for all Rotors and Sliders, AZ Display, Multidock Open/Close, WAI Bank Left/Right + 1 strip Left/right, ProChannel 1 strip left/right, prev/next Plugin in ACT Mode, +- 1,2,3 dB for audio selections, split, spit+del, fit all, fit vertical, global solo, global mute, exclusive solo, Dim solo, speech on/off, Screenset 1 and 2, Track/Bus Selector.....

**As I wrote above, pictures of all 4 Modes
at the end of the document!**

But now the Modes in Detail

8-Track Mode

(8-Track Mode is the „Normal Mode“, without any Mode Button pressed)

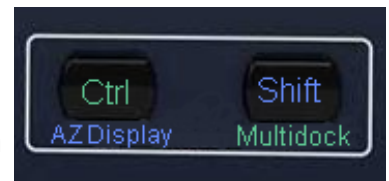
First of all: **Navigation** in Sonar with BCR2000 and Preset B9

Important! Ctrl and Shift Buttons

Ctrl

Green lettered Buttons are pressed after pressing **Ctrl**.

First press **Ctrl** and within 2 seconds any Function Button or move a Rotor.



Shift

Blue lettered Buttons are pressed after pressing **Shift**.

First press **Shift** and within 2 seconds any Function Button or move a Rotor.

Some Buttons are with **Shift Hold**. Hold Shift and press the Button you want to.

There is also a **Shift Lock** Function. Normally Shift Mode of the Shift Button is held 2 seconds, then it returns to Normal Button Mode.


With pressing Shift Key twice, the Shift Lock Function is activated and it stays in Shift Mode until you press shift again!

For example: In 24-Track Mode you press Shift twice and are in Shift Lock Mode to only adjust Panning without have to press Shift again for the Pan of another Track.

Long Press

Some Functions are recalled by pressing the Button at least 1 second. The Marker Left and right Buttons for example in Long Press Mode are Selection Left and right instead of Marker Left and right.



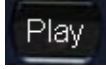
At the Bottom left we have the  Button (FB13), who stops and rewinds back to the Now Time Marker if selected in Sonar.

If pressed **more than a second**, it stops and goes back 2 bars, very helpful for Audio Editing to listen again.

If pressed **more than 2 seconds**, it Resets from all Modes back to 8-Track Mode.

To hold first **Ctrl** (FB9), then press Stop, BCR200 exits to Preset 2. From there I can adjust Vol, Pan a.s.o from my Mixing desk.

Pressing **Ctrl** again, we're back at Preset 1 to work with Sonar.

At the Bottom right there is the  Button (FB14). To **Record**, first press **Ctrl** and then Play within 2 seconds .

Above Stop and Play are the Goto Marker Left and Goto Marker right Buttons (FB11-12).

At the Top below the Colours left we have Bus/Track WAI Toggle (FB5). The Focus you can see on the WAI Track 1-8 or Bus 1-8.

The 2 Buttons below are the Bank Buttons (FB7-8). There you can switch the WAI Focus from Track/Bus 1-8 to Track/bus 9-16, 17-24 a.s.o.

Also we can switch WAI with **Ctrl** + Bankbuttons 1 Strip left or right, that means from Strip 1-8 to 2-9!

Bank switches also Previous/Next PlugIn in ACT Mode or Previous/Next Strip in ProChannel Mode.

Pressing first **Ctrl** + **Shift** (FB10) opens the **Multidock**, the other way, pressing first **Shift** + **Ctrl** opens the AZController Display. The same with closing these 2 windows!



Here we have Track Select (**R20**). WAI follows Track Select, so if you change to Track 9, WAI is on Track 9-16, if you go back to Track 8, WAI is on Track 1-8. **R21** is Zoom all Track vertical and with **Ctrl** Zoom 1 Track only.

R22 at the Bottom is Zoom Horizontal. Jog Left and right we have on **R23**, **Scrubbing** on the same Rotor with **Ctrl**.

At least **R24** on the right goes continuously 1 bar to the right or left.

Editing



With any Clip on a selected Track we can (**Ctrl** + **FB5**) **Split** the Clip at the Now Time Marker or **Split + Delete** (**FB6**) the left portion of the splitted Clip. You must not select the Clip first.

With **Shift Hold** (**FB10**) plus **[-dB]** (**FB7**) or **[+dB]** (**FB8**) you can increase or decrease Audio Material. The Amount depends on the number how often you press the Buttons. 1, 2 or 3 times increase or decreases the selected material by 1, 2 or 3 dB!



Long Press **FB11** or **FB12** is **Sel1/Sel2**, Selection From and Selection To in Sonar.

With **Ctrl** and **Auto** (**FB11**) we turn Global Automation Write Off.

Fine (**FB12**) with **Ctrl** turns Fine Mode for all Rotors and Sliders On or Off. Normally on a Audio Track they increment or decrement by a amount of 0.3 dB. In Fine Mode it is 0.1 dB.



Shift + Sel>Loop (FB13) makes a Loop over the Selection Points, while **Ctrl + Loop (FB13)** turns Loop On and Off.

At least **Shift + Set Marker (FB13)** sets a Marker at the Now Time.



Now this is very fine:) **SD +/- (R 18)** is Speed Dial.

With that you can Speed Change all Numbers very fast.

You select Notes in Piano Roll View, click on Event Inspector for example and there you can change every field quickly with Speed Dial. You must not type in the number.



FB1 is Global Solo Off, **FB3** Global Mute Off. **FB2** switches to ProChannel Mode, **FB4** switches to 24-Track Mode.

We can change the Solo Mode to Exclusive with **Shift + Ex (FB1)**, to Dimmed Solo with **Ctrl + Dim!**

Long Press FB2 opens the ProChannel Inspector, while **Shift + S1** is Screenset 1 and **Ctrl + S2** Screenset 2.

Very nice is the Speech Function, it says the Name of the selected Track, so you don't have to look at the Monitor to know on which Track you are working on.

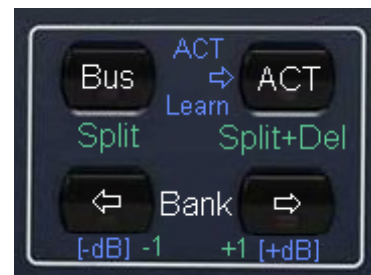
Activate Speech with **Shift + Spc (FB3)** With **Ctrl + SY (FB3)** you can recall the last speech.

Specials



I often do practice Bass with some Drum Tracks and therefore I need to quickly change Tempo to get faster in playing. So Marko involved a Tempo change Rotor.

Just Select **Ctrl** and move Tempo Rotor (**R 24**) left or right.

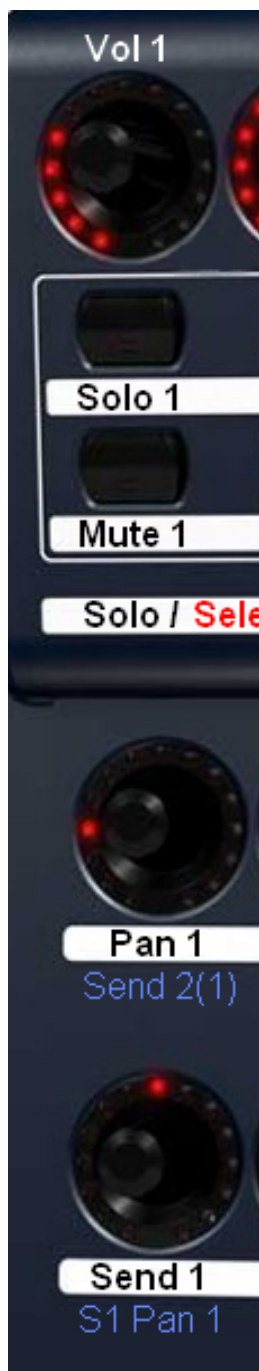


At least for 8-Track Mode: ACT Speed Dial.

Press **Shift** plus the ACT Button (**FB 6**) and you have activated ACT Speed Learn Mode! Open the Plugins Window, move the Parameter you want to Speed Dial and after that Move ACT Speed Dial Rotor (**R 19**).

The Parameter you selected can now be controlled by this Rotor until you bind another Parameter to it. Very handy for controlling Cutoff for example.

Now let's have a look to the Rotors, Sliders and Buttons of 8-Track Mode!



I just show the first Track, cause it's the same for Track 2-8!

At the upper we have **S 1**, who controls Volume 1 of WAI. Also you can see the LEDs, which show the current Volume, if you are moving the Rotor or it shows the Meter Level of the current Track.

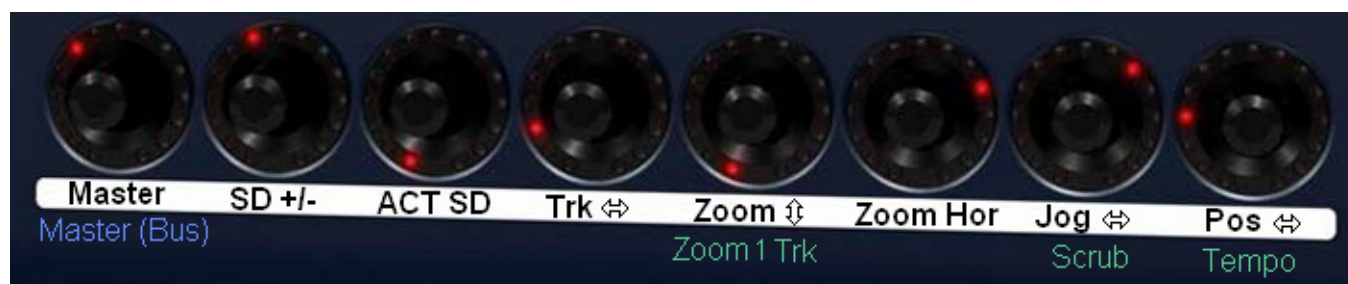
Solo 1 is controlled by **B 9**.

Mute 1 is **B 1**.

Here we have Pan 1 (**R 1**) but FX Send 2 with **Shift**.

Send FX 1 (**R 9**) and Send FX Pan 1 with **Shift**.

Remember, that Rotors 17-24 have these other Functions below only in 8-Track Mode!



That's all for now with 8-Track Mode, let's go to 24-Track Mode

24 - Track Mode

All Function Buttons are available in 24 – Track Mode too!
So we only have to look at the Sliders, Buttons and Rotors!



Different from 8 - Track Mode!

S 1-8 adjust Bus Volume 1 – 8, very handy, cause you can control 24 Tracks and 8 Busses!

Soloing for Busses 1-8 (**FB 7-8**)

Muting of Busses 1-8

Volume of Tracks 17-24, with Bank right (**FB 8**) Track 25-48
With **Shift** + Rotors we have Pan of Tracks 17-24.

Double Press of **Shift** is the Shift Hold Function. Normally the **Shift** Button is released after 2 seconds.

Nothing more to say, Volume and Pan (with **Shift**) of Tracks 9-16. (33-40).

Again Volume and Pan of Tracks 1-8 (25-32).

ProChannel - Mode

In Pro Channel Mode we have Control over all Standard Pro Channel PlugIns plus FX Sends 1-4!

Track and Bus Compressor,
QuadCurve EQ,
Tube Saturator,
Console Emulator,
FX Sends 1-4 Vol, Send Pan, On/Off.

Let's start with:

FX Section



Send 1-4 Vol on **S 1-4**,

Send 1- 4 Pan with **Shift**
(**S 1-4**).

Buttons 9-12 (**B9-12**)
are Sends 1-4 On/Off
plus Pre/Post with **Shift**.

Tube Saturator and Console Emulation Section:

We have Track Pan and Volume on Slider 7+8 (**S 1-4**).



Tube In on Slider 5, Out with
Shift. (**S5**)

Tube Drive on **S6**.

CE Type on **S6** with **Shift**.

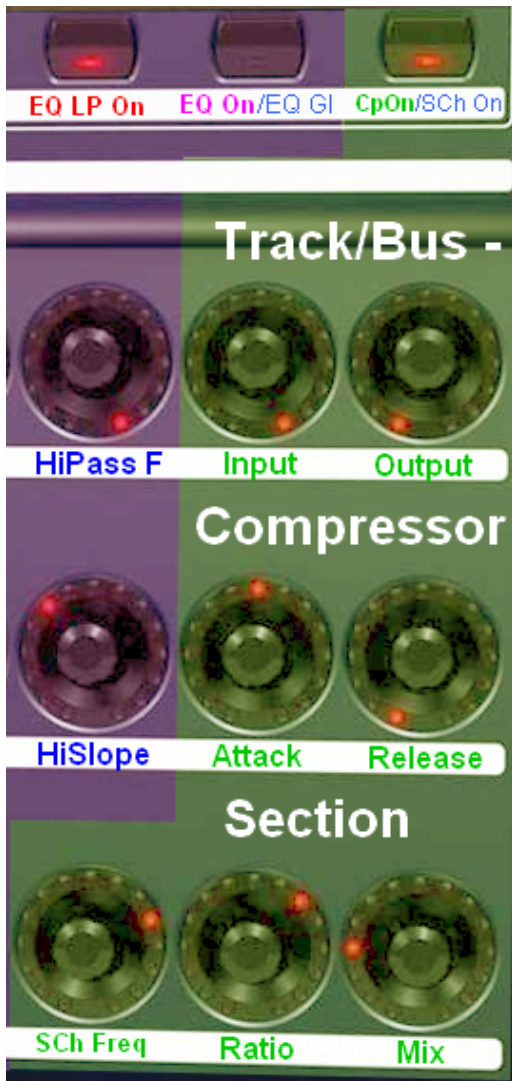
CE Trim on **S7** with **Shift**.

CE Drive on **S8** with **Shift** too.

B13 switches Tube Type, **B14** is
Tube On/Off.

At least CE Tolerance On/Off and CE On/Off with Buttons 15/16 (**B15-16**)

Compressor Section:



Whether we are working on Track- or Buscompressor, some Knobs are different.

For Track Compressor we have Input (R7) and Output (R8), Attack on R15, Release on R16.

With R23 we control Ratio, the Mix with R24.

Button 8 (B8) turns on both, Track- and Bus Compressor.



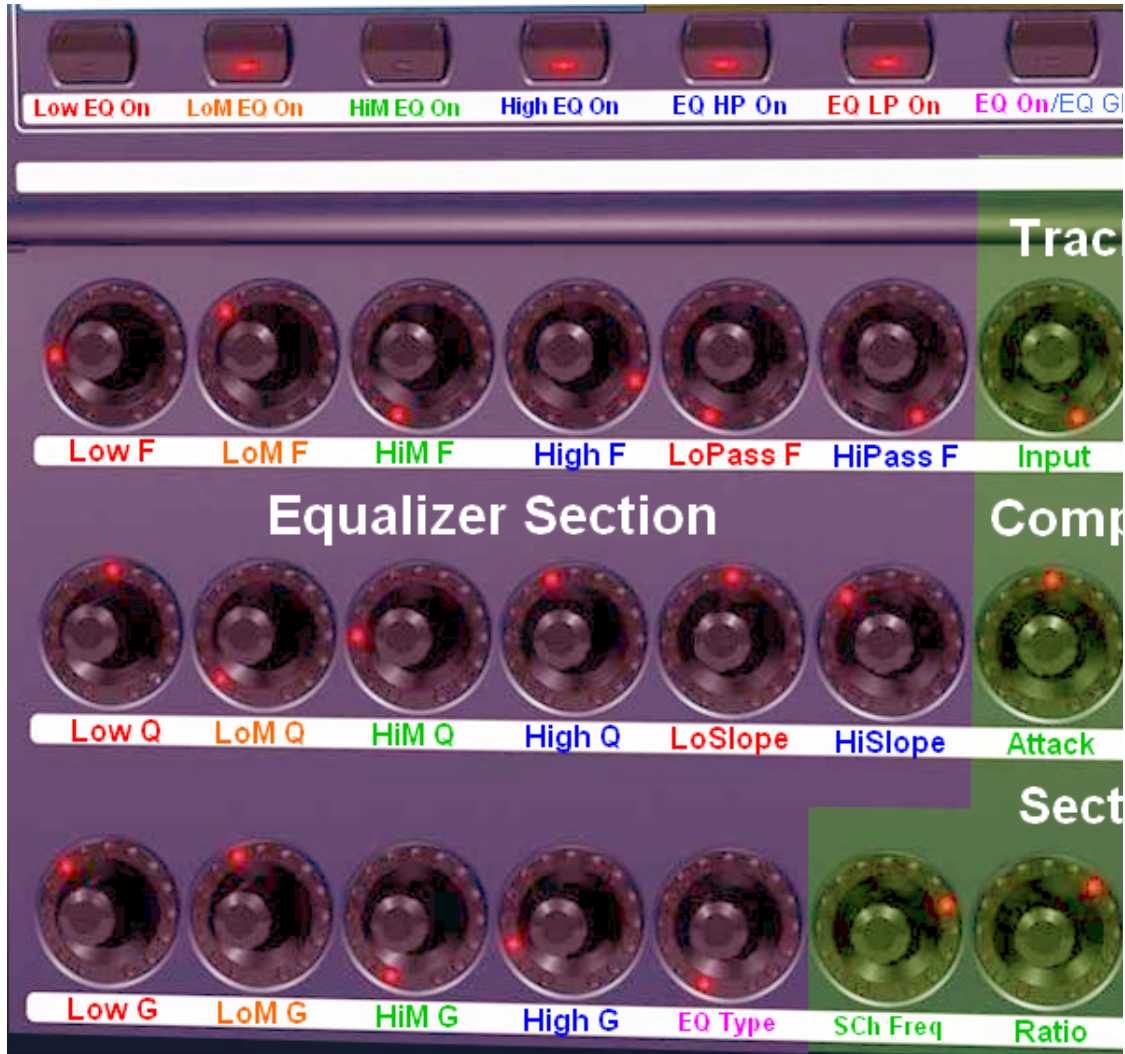
On Bus Compressor we have different Names! Threshold is adjusted by Input Rotor (R7), MakeUp by Output Rotor (R8).

Dry/Wet lies on Mix Rotor (R24). Attack, Release and Ratio is controlled by the same Rotors (R15), (R16), (R23).

Additional on Bus Compressor we have the Button 8 with Shift (B8), which turns on SideChain and Rotor 22 (R23), which changes the SideChain High Pass Frequency .

Quad Curve EQ Section:

This is the biggest Section for sure, cause we have a lot of Controls:



You can see Buttons 1-7, Rotors 1-6, Rotors 9-14 and Rotors 17-21 are preserved for the EQ. With these we adjust the 6 Bands of the EQ.

Buttons for **LowEQ On** (B1), **LowMid EQ On** (B2), **HiMid EQ On** (B3), **High EQ On** (B4), **HiPass On** (B5), **LowPass On** (B6), **EQ On** (B7) and with **Shift EQ Gloss On** (B7). The same Buttons for Off of course!

Rotors 1-6 for **Low Frequency** (R1), **LowMid Frequency** (R2), **HiMid Frequency** (R3), **High Frequency** (R4), **HiPass Frequency** (R5) and **LowPass Frequency** (R6)

Rotors 9-14 for **Low Q** (R9), **LowMid Q** (R10), **HiMid Q** (R11), **High Q** (R12), **LowPass Slope** (R13) and **HiPass Slope** (R14)

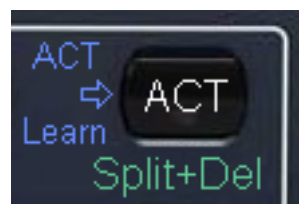
Rotors 17-21 for **Low Gain** (R17), **LowMid Gain** (R18), **HiMid Gain** (R19), **High Gain** (R20) and at least **EQ Type** (R21).

ACT - Mode



Not much to say with ACT Mode.

Just change to ACT Mode by clicking ACT Button.



ACT Learn i with **Shift** is only for Act Speed Dial Rotor.

In ACT Mode we have Sliders 1-8, Rotors 1-24 and Buttons 1-16 available for controlling Synthesizers and PlugIns.

With the Function Buttons Bank → and ← you can switch between the inserted PlugIns.

For in Sonar ACT Learn doesn't work correctly, we have 2 other possibilities to assign Sliders, Rotors and Buttons to different Parameters of the PlugIns.

First: AZSlow wrote a piece of Software called AZACTFix, which is available on his Website

<http://www.azslow.com/index.php?action=downloads;cat=5>

A Description for it is downloadable here:

[AZACTFix Description](#)

The second possibility is Sonar ACT XML Editor from MarKo which I want to describe here.

You too can download it from AZSlows Website:

[ACT XML Editor](#)

1. Open AZController Properties Window.
2. Open ACT XML Editor
3. Insert the PlugIn to the FX Bin and open it. When you move a knob, you can see its name in XML Editor and AZController.

I decided to now use BT Analog TrackBox for describing, cause there are a lot of Parameters to control, as you can see.



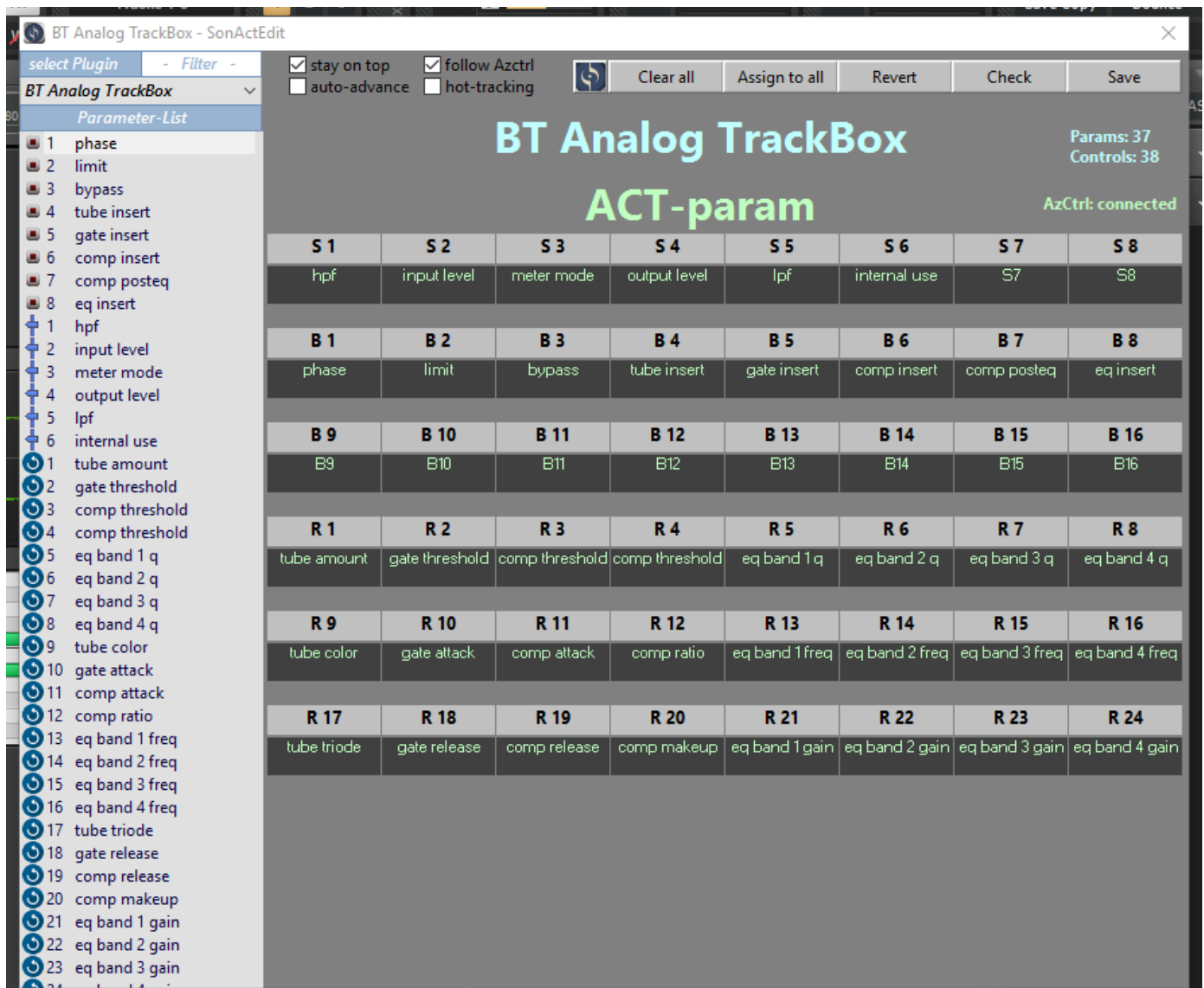
4. Now just close Sonar. XML Editor attaches all Parameters to the Sonar XML File „genericpluginparams.xml“.
5. Start Sonar again, open AZController Window, open ACT XML Editor.
6. Open the BT Analog TrackBox PlugIn Window. Now in XML Editor Window you can see this: (Not exactly the same cause I already have assigned the Knobs.

At the left upper corner you can select the PlugIn, which is selected automatically as you open the PlugIn Window.

In the PlugIn you can see 8 Rows of 3 Rotors and I wanted to have them on the BCR how I can see it in the PlugIn.

So I just click on the Parameter on the left and then click on the Rotor on the right Side where I want to assign it.

7. I click on tube amount, then on R1 and it is assigned. The same with tube colour → R9 and tube triode → R17.
8. The same with the whole rest of the Parameters. As you can see it looks the same as in the PlugIn Window.
9. Click on Save and then exit and start Sonar again.
10. Now when opening the file again and switching to ACT Mode and the PlugIn „BTAnalog TrackBox“, all Parameters are assigned correctly to your BCR2000.





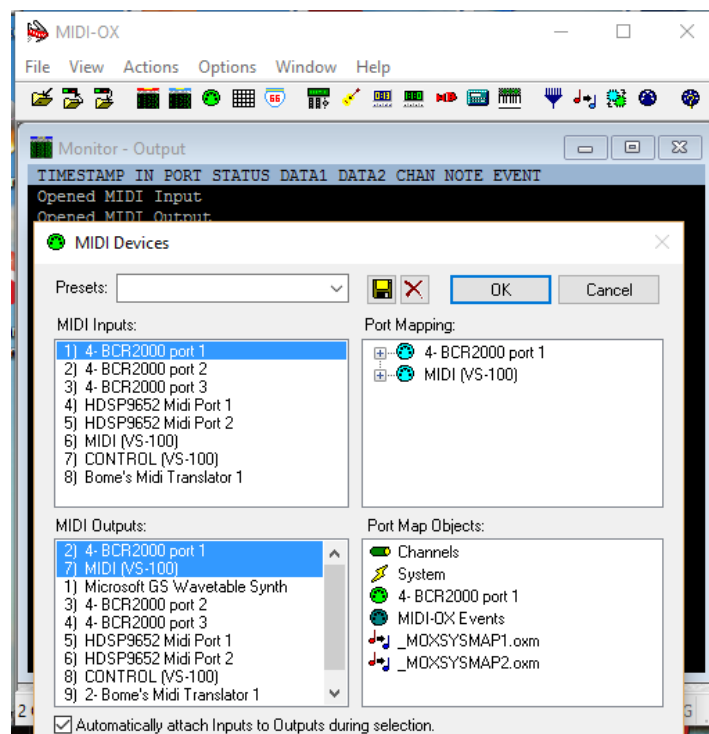






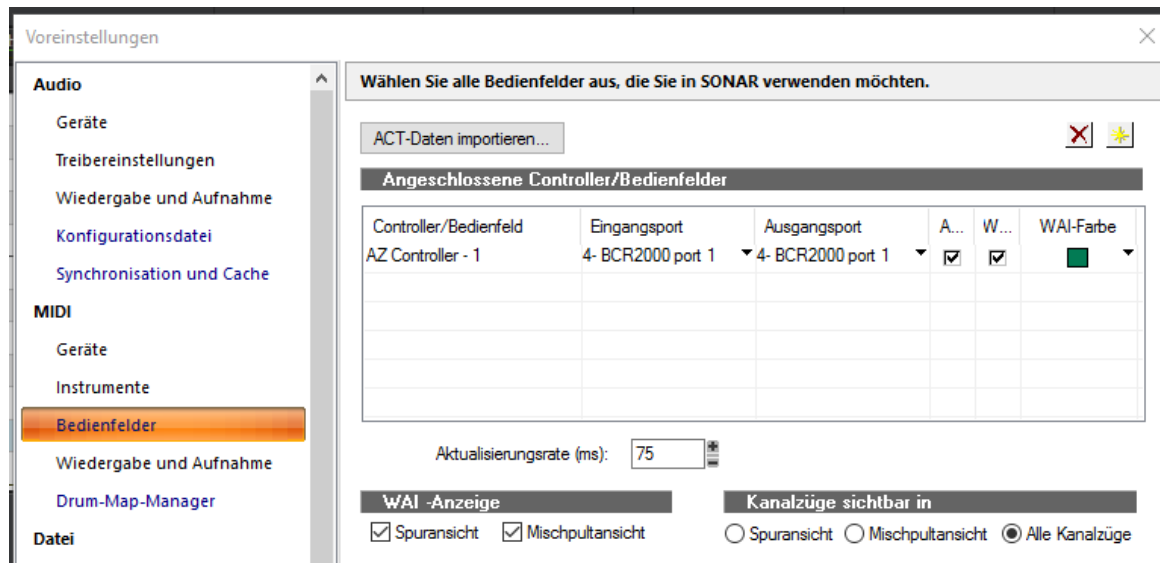
Installation

1. Download all Files: [Download](#)
 - a) BCR Midi Drivers 64bit or 32bit
 - b) MidiOX for sending SYX File
 - c) BCR2000 All Buttons SYX File
 - d) AZ Controller PlugIn
 - e) Preset B9.06.spp from MarKo
 - f) Sonar ACT XML Editor from MarKo
 - or g) AZ ACTFix
2. Install BCR Midi Drivers
3. Install MidiOX
4. In Options → Midi Devices.... select BCR2000 Port 1

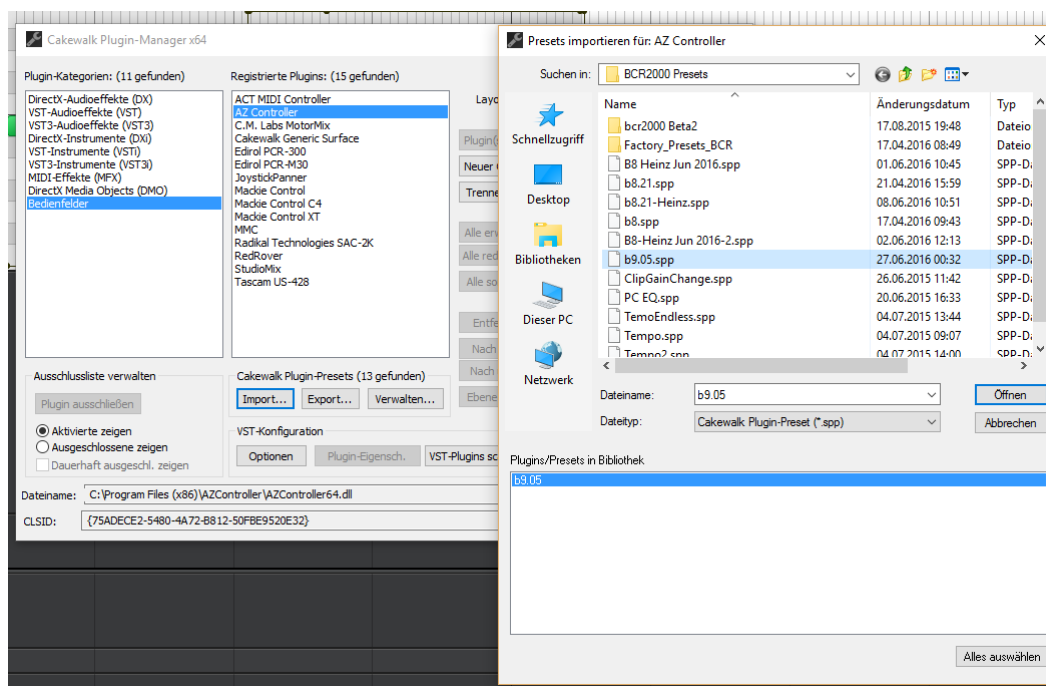


5. In Actions → Send → Syx File search for your downloaded „BCR2000 AZController SYX (all Buttons)“ and send it.
6. Install AZ Controller PlugIn

7. In Sonar press „P“ for (Default) Settings
8. Go to Midi → Control Panels
9. Add new Controller → Select AZController with Midi In/Out BCR2000 Port 1

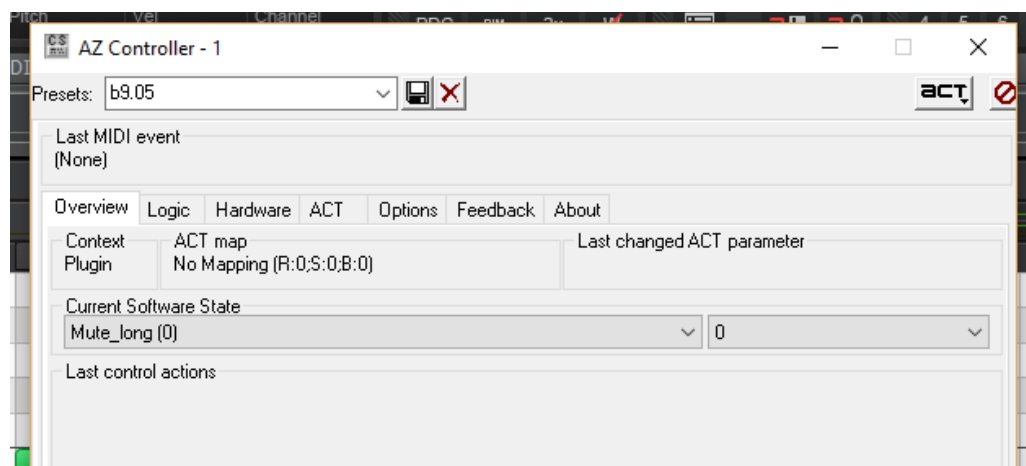


10. Activate ACT and WAI if not yet activated
11. In Sonar Select Utilities Menu → PlugIn Manager
12. In PlugIn Manager select Control panels → AZController



13. Import your downloaded Preset B9.06
14. Close PlugIn Manager

15. Open Utilities Menu → AZController
16. In AZ Controller View open Preset b9.05



17. That's it hopefully.